

CORPORATE PROFILE

Mitsubishi UFJ Research and Consulting Co., Ltd.
5-11-2 Toranomom, Minato-ku, Tokyo 105-8501, Japan
Published June 2017

As a member of MUFG, we will comply with the MUFG Principles of Ethics and Conduct.



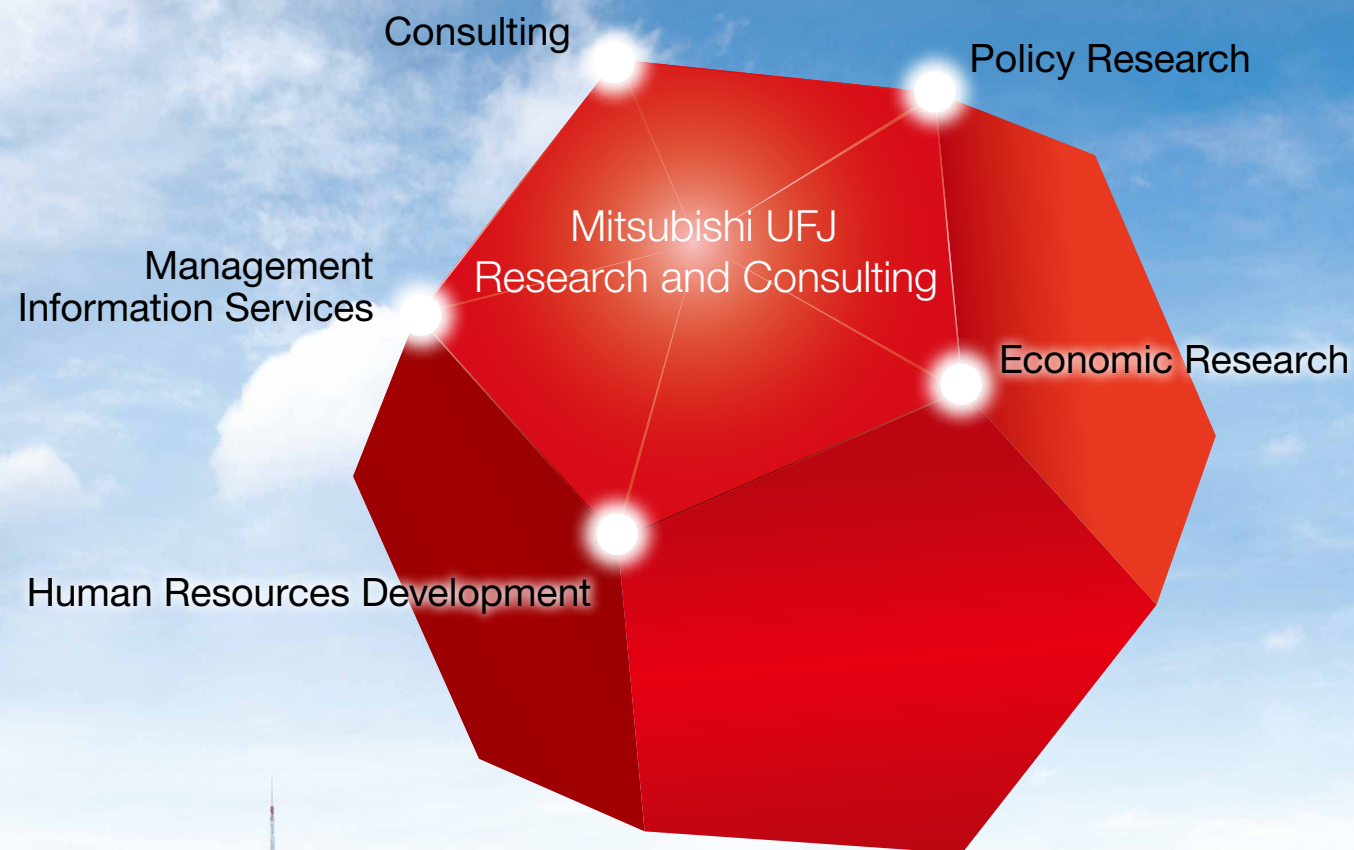
Intelligence. In sight. Expertise.

Harnessing the power of knowledge, together.
For a brighter, stronger tomorrow.



As the think tank and consulting firm of the Mitsubishi UFJ Financial Group (MUFG), we offer research and advisory services on economic and social issues and government policy, as well as various consulting services for private enterprises.

By combining our expertise in five core areas, we provide optimal solutions for our clients and ongoing support for implementing these solutions.



Consulting

Taking on the many management issues that companies encounter has made us a leading provider of consulting services.

With almost 250 consultants, we handle around 2,000 projects every year for clients ranging from small businesses up to large corporations.

From this experience, we have the practical skills and professional know-how to provide support for effective and efficient project execution.

Key fields

Management/business strategy (domestic and international), organizational/personnel strategy, IT strategy, marketing strategy, business management, global operations support

Policy Research

Based on highly specialized studies and research, we help national and local governments to draft and implement policies.

With around 180 policy researchers and analysts, we are responsible for around 600 projects every year.

We also disseminate information and advocate and promote policy recommendations to the public.

Key fields

Environment, natural resources, and energy; healthcare and social welfare; the economy, industry, and labor; urban policy and rural revitalization; economic development assistance and international trade

Management Information Services

Our wide-ranging management information services, which include lectures, seminars, and online services, enable us to comprehensively support the business growth of Japan-based client companies of the Bank of Tokyo-Mitsubishi UFJ.

Human Resources Development

Through our human resources development services, including seminars, business courses, and distance education programs, we continue to support the growth of numerous private enterprises in Japan.

Economic Research

With expertise spanning a wide range of fields in economics and finance, our economists conduct and publish the results of elaborate multidimensional studies and analyses. Through these efforts, we provide valuable economic and financial information to our clients and the public.



A member of Japan's largest financial group



Mitsubishi UFJ Research and Consulting (MURC)

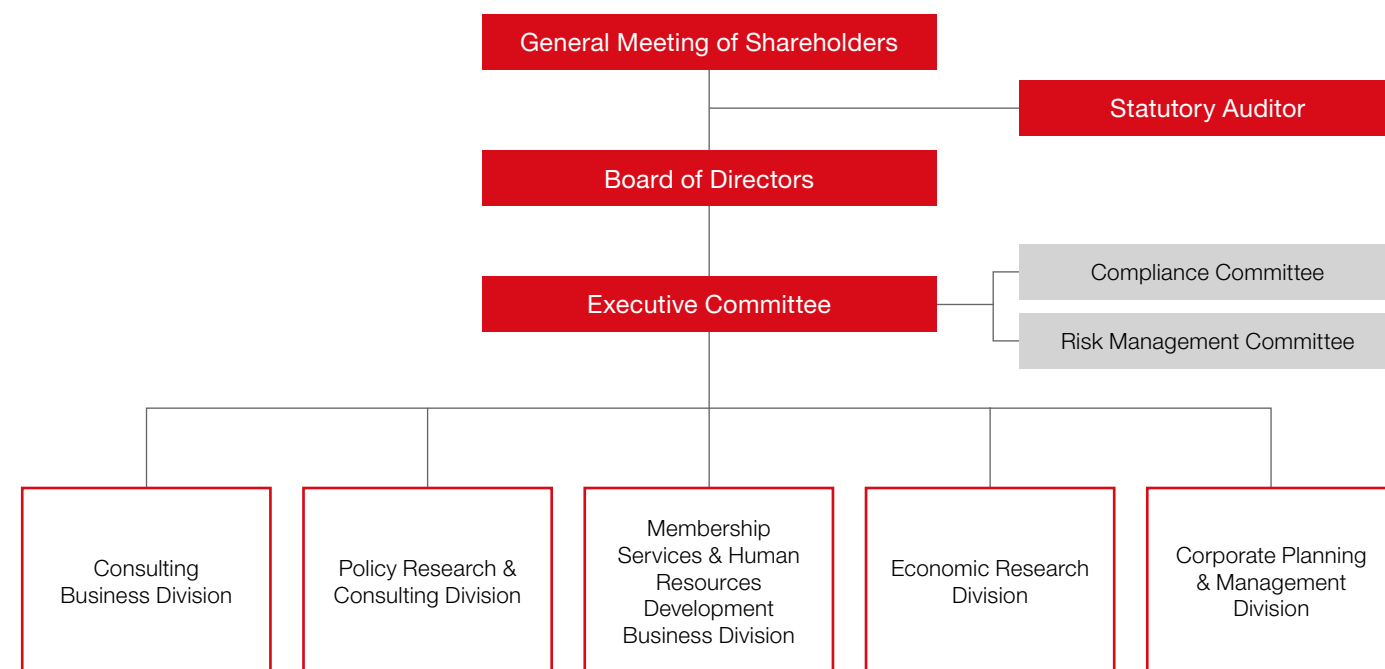
Outline

Company	Mitsubishi UFJ Research and Consulting Co., Ltd.
Headquarters	5-11-2 Toranomom, Minato-ku, Tokyo 105-8501, Japan
URL	http://www.murc.jp/english/
Established	October 1985
Paid-in Capital	2.06 billion yen
President	Satoshi Murabayashi
Chairman, The Board of Counselors	Iwao Nakatani, Ph.D.
Employees	Approximately 750
Stockholders	The Bank of Tokyo-Mitsubishi UFJ, Ltd., Mitsubishi UFJ Capital Co., Ltd., The Mitsubishi UFJ Factors Ltd., and other institutions
Directory	Tokyo (Headquarters), Nagoya, and Osaka
Subsidiary	PT. MU Research & Consulting Indonesia MidPlaza 2, 18th Floor, Jl. Jend. Sudirman Kav. 10-11, Jakarta 10220, Indonesia



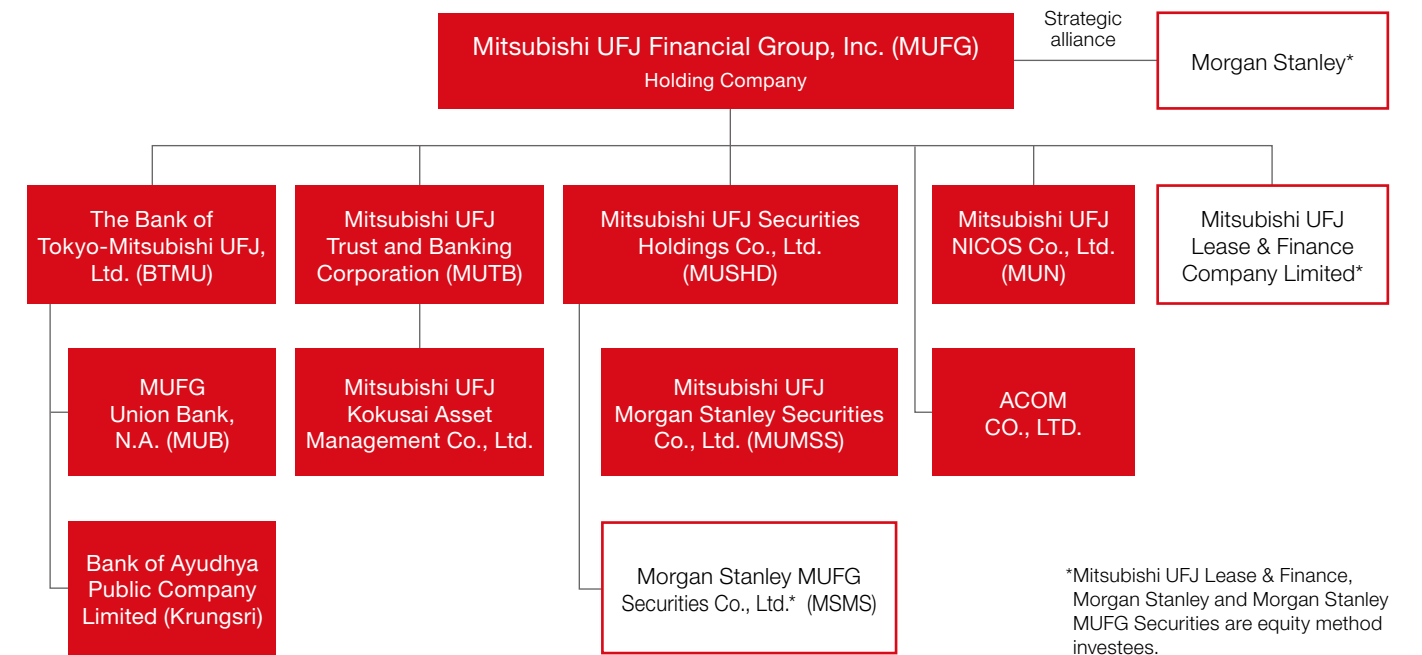
<http://www.murc.jp/english/>

Organizational Chart



Mitsubishi UFJ Financial Group (MUFG)

Group Comprehensive Strength



Strong Customer Base

Domestic Individual Accounts: **40 million**

Domestic Corporate Accounts: **400,000**

Global Network

Domestic Network:
Approx. 1,100 locations

Domestic Employees:
Approx. 90,000

Overseas Network:
Approx. 1,200 locations
in around **50 countries**

Overseas Employees:
Approx. 50,000