

CORPORATE PROFILE

Mitsubishi UFJ Research and Consulting Co., Ltd.
5-11-2 Toranomon, Minato-ku, Tokyo 105-8501, Japan
Published August 2018

As a member of MUFG, we will comply with the MUFG Principles of Ethics and Conduct.

This brochure was printed using environmentally friendly materials at a Green Printing certified factory.



Intelligence. Insight. Expertise.

Harnessing the power of knowledge, together.
For a brighter, stronger tomorrow.



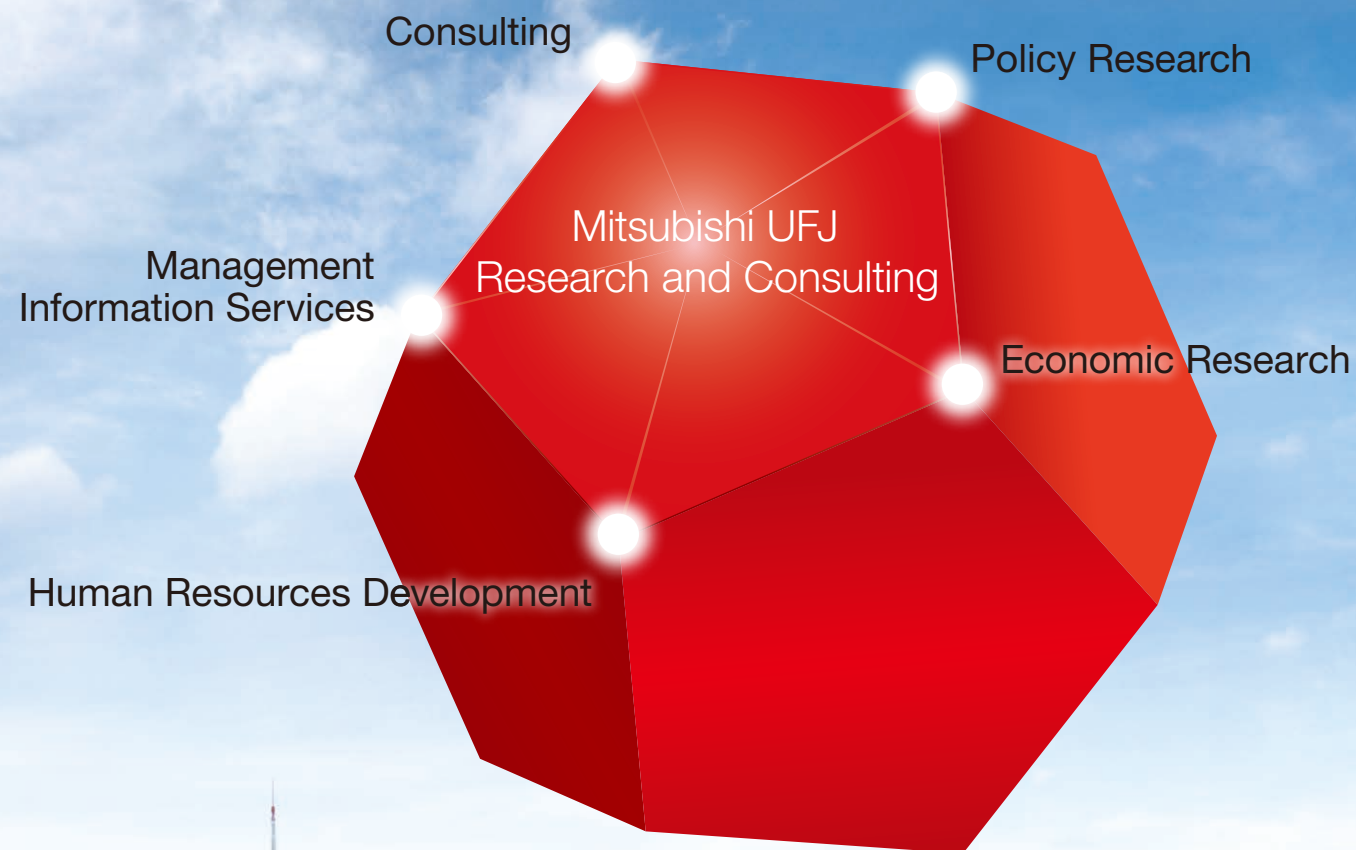
Philosophy

Humanism, Romanticism, Realism

Looking to the future, we create value through pioneering intellectual work, exploring reality and ideals and putting our trust in people and society.

As the think tank and consulting firm of the Mitsubishi UFJ Financial Group (MUFG), we offer research and advisory services on economic and social issues and government policy, as well as various consulting services for private enterprises.

By combining our expertise in five core areas, we provide optimal solutions for our clients and ongoing support for implementing these solutions.



Consulting

Taking on the many management issues that companies encounter has made us a leading provider of consulting services.

With almost 280 consultants, we handle around 2,000 projects every year for clients ranging from small businesses up to large corporations.

From this experience, we have the practical skills and professional know-how to provide support for effective and efficient project execution.

Key fields

Management/business strategy (domestic and international), organizational/personnel strategy, IT strategy, marketing strategy, business management, global operations support

Policy Research

Based on highly specialized studies and research, we help national and local governments to draft and implement policies.

With around 190 policy researchers and analysts, we are responsible for around 600 projects every year.

We also disseminate information and advocate and promote policy recommendations to the public.

Key fields

Environment, natural resources, and energy; healthcare and social welfare; the economy, industry, and labor; urban policy and rural revitalization; economic development assistance and international trade

Management Information Services

Our wide-ranging management information services, which include lectures, seminars, and online services, enable us to comprehensively support the business growth of Japan-based client companies of MUFG Bank.

Human Resources Development

Through our human resources development services, including seminars, business courses, and distance education programs, we continue to support the growth of numerous private enterprises in Japan.

Economic Research

With expertise spanning a wide range of fields in economics and finance, our economists conduct and publish the results of elaborate multidimensional studies and analyses. Through these efforts, we provide valuable economic and financial information to our clients and the public.



A member of Japan's largest financial group



Mitsubishi UFJ Research and Consulting (MURC)

Outline

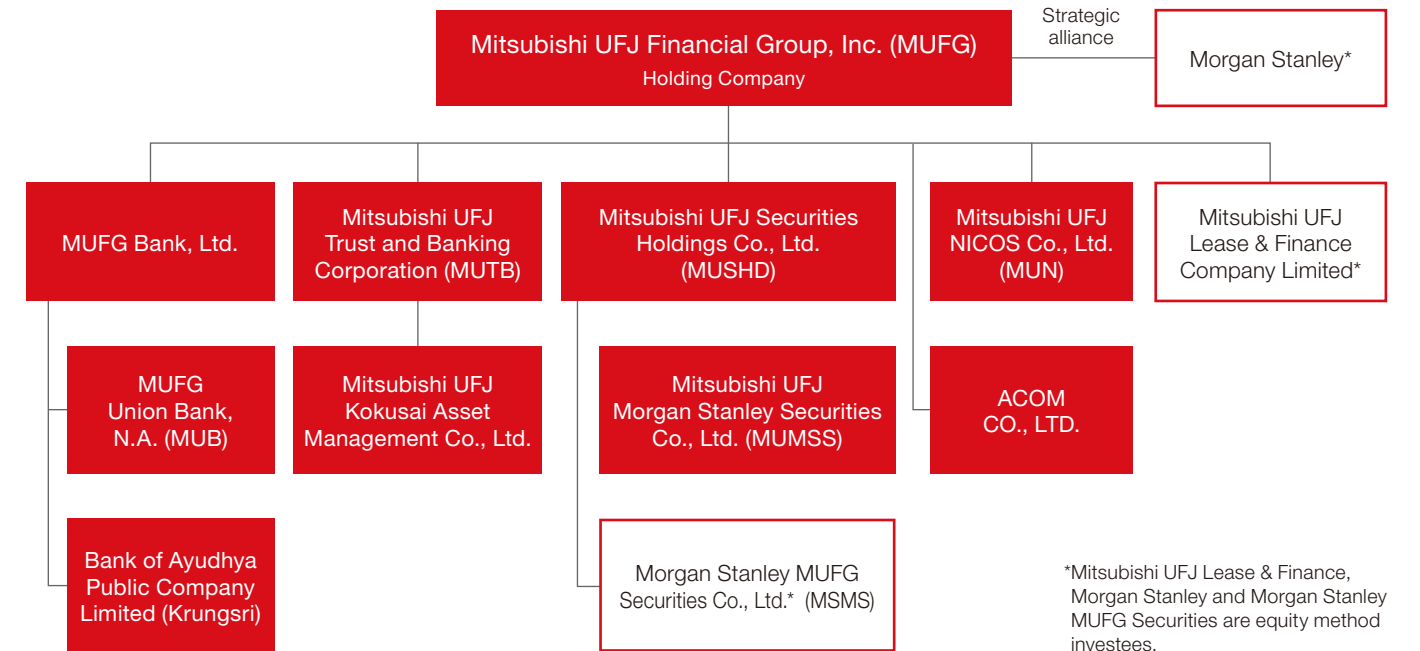
Company	Mitsubishi UFJ Research and Consulting Co., Ltd.
Headquarters	5-11-2 Toranomon, Minato-ku, Tokyo 105-8501, Japan
Established	October 1985
Paid-in Capital	2.06 billion yen
President	Satoshi Murabayashi
Chairman, The Board of Counselors	Iwao Nakatani, Ph.D.
Employees	Approximately 850
Stockholders	MUFG Bank, Ltd., Mitsubishi UFJ Capital Co., Ltd., The Mitsubishi UFJ Factors Ltd., and other institutions
Directory	Tokyo (Headquarters), Nagoya, and Osaka
Representative Office	The Representative Office of Mitsubishi UFJ Research and Consulting Co., Ltd. in Ho Chi Minh City
Subsidiary	PT. MU Research and Consulting Indonesia MU Research and Consulting (Thailand) Co., Ltd.



www.murc.jp/english

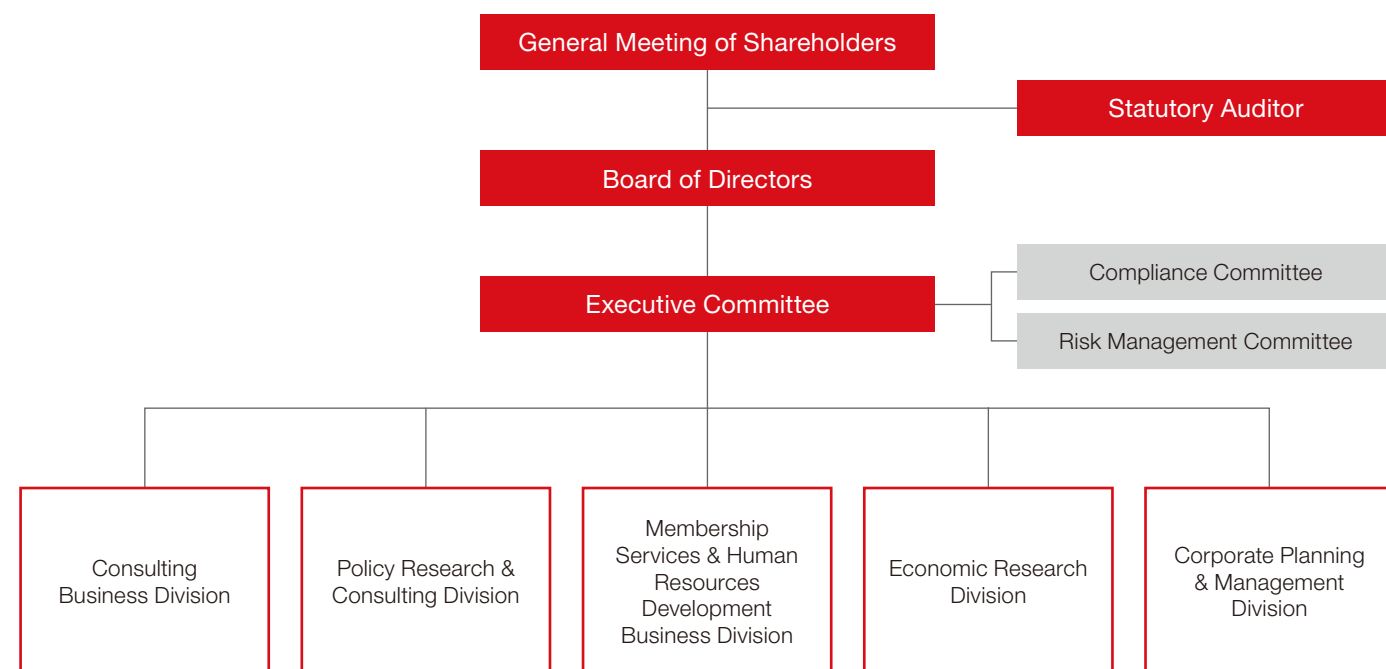
Mitsubishi UFJ Financial Group (MUFG)

Group Comprehensive Strength



*Mitsubishi UFJ Lease & Finance, Morgan Stanley and Morgan Stanley MUFG Securities are equity method investees.

Organizational Chart



Strong Customer Base

Domestic Individual Accounts: **40 million**

Domestic Corporate Accounts: **400,000**

Global Network

Domestic Network:
Approx. **1,100** locations

Overseas Network:
Approx. **1,200** locations
in around **50** countries

Domestic and Overseas Employees:
Approx. **150,000**

