

CORPORATE PROFILE

As the think tank and consulting firm of the Mitsubishi UFJ Financial Group (MUFG), we offer research and advisory services on economic and social issues and government policy, as well as various consulting services for private enterprise. By combining our expertise in five core areas, we provide optimal solutions for our clients and ongoing support for implementing these solutions.

Philosophy

Humanism, Romanticism, Realism

Looking to the future, we create value through pioneering intellectual work, exploring reality and ideals and putting our trust in people and society.



Consulting

By taking on the many management issues that companies encounter, we have become a leading provider of consulting services.

With almost 350 consultants, we handle around 2,000 projects every year for clients ranging from small businesses up to large corporations.

From this experience, we have gained the practical skills and professional know-how to provide support for effective and efficient project execution.

Key fields

Management & business strategy (domestic and international), open innovation, organizational & personnel strategy, HR technology, IT strategy, ESG strategy, marketing strategy, business management, global operations support



Policy Research

Through highly specialized research and analysis, we help national and local governments.

We have over 200 researchers and analysts based in Tokyo, Nagoya and Osaka.

Also, in the spirit of giving back to society, we are actively involved in holding seminars, publishing documents and media appearances to gain the understanding of the general public.

Key fields

Environment and energy; healthcare and social welfare; economy, industry and labor; urban policy and rural revitalization



Management Information Services

Our wide-ranging management information services, which include lectures, seminars and online services, enable us to comprehensively support the business growth of Japan-based client companies of MUFG Bank.



Human Resources Development

Through our human resources development services, including seminars, business courses and distance education programs, we continue to support the growth of numerous private enterprises in Japan.



Social Impact Partnership

As digital transformation and globalization progress rapidly, in cooperation with our domestic and global partners in the three domains of digital government & smart cities, global health, and open innovation, we are conducting holistic business activities ranging from making social policy recommendations, research and consulting, all the way through to societal implementation.



Economic Research

With expertise spanning a wide range of fields in economics and finance, our economists conduct and publish the results of elaborate multidimensional studies and analyses. Through these efforts, we provide valuable economic and financial information to our clients and the public.



A member of Japan's largest financial group

Mitsubishi UFJ Research and Consulting (MURC)

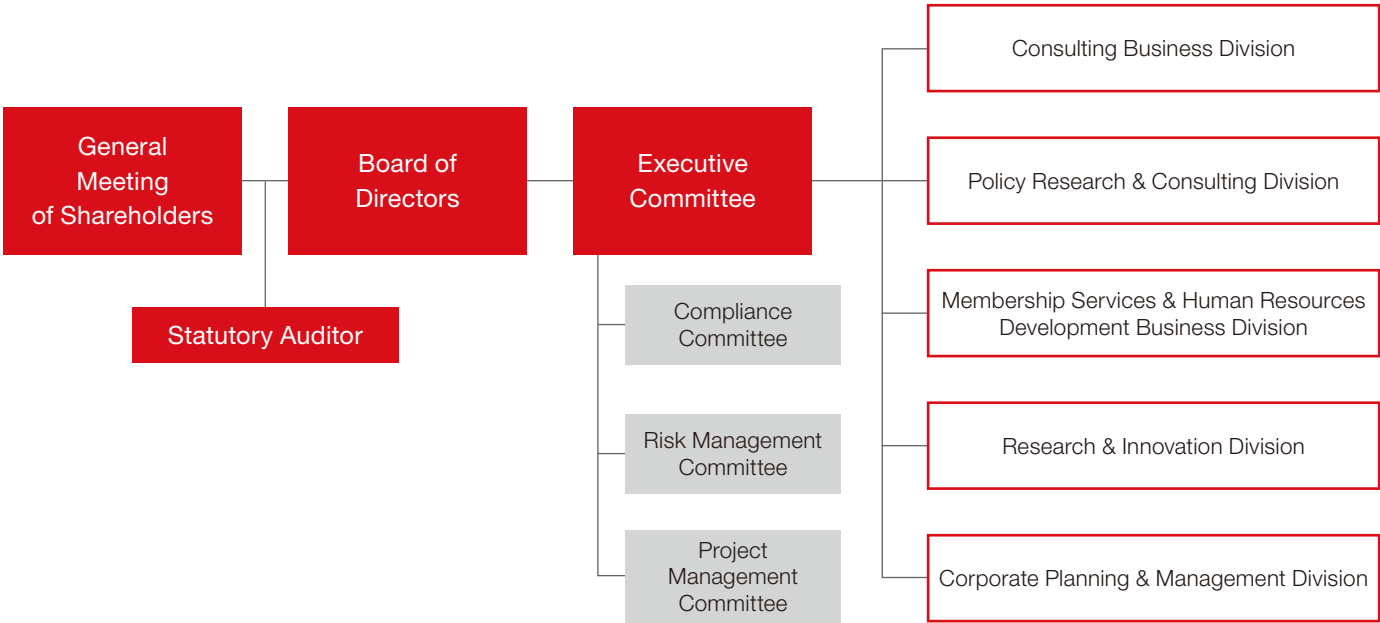
Outline

| | |
|-----------------------|---|
| Company | Mitsubishi UFJ Research and Consulting Co., Ltd. |
| Headquarters | 5-11-2 Toranomom, Minato-ku, Tokyo 105-8501, Japan |
| Established | October 1985 |
| Paid-in Capital | 2.06 billion yen |
| President | Masakazu Ikeda |
| Chairman | Shumpei Takemori |
| Employees | Approximately 1,010 as of June 1,2021 |
| Stockholders | MUFG Bank, Ltd., Mitsubishi UFJ Capital Co., Ltd., The Mitsubishi UFJ Factors Ltd., and other institutions |
| Directory | Tokyo (Headquarters), Nagoya, and Osaka |
| Representative Office | The Representative Office of Mitsubishi UFJ Research and Consulting Co., Ltd. in Ho Chi Minh City |
| Subsidiary | PT. MU Research and Consulting Indonesia MU Research and Consulting (Thailand) Co., Ltd. |



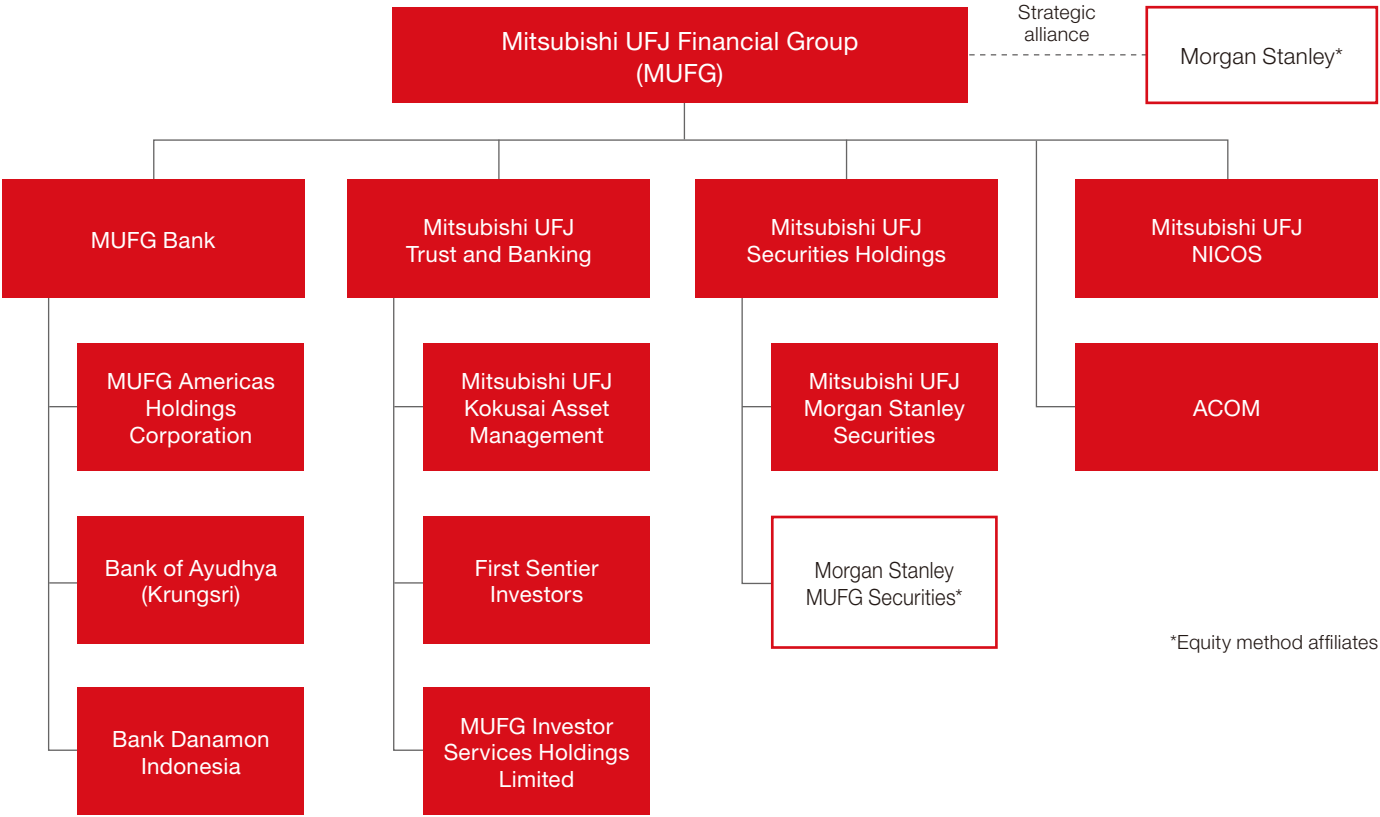
www.murc.jp/english

Organizational Chart



Mitsubishi UFJ Financial Group (MUFG)

Group Comprehensive Strength



*Equity method affiliates

Global Network

