

CORPORATE PROFILE

Shaping the future with the power of insight

There is no end to the issues we need to address in our society and the wider world. New challenges of a bewildering complexity are constantly arising to stand in our way. But we keep moving forward, driven by our ideals and by our determination to progress toward the kind of future we want to make a reality.

We have partners with a diverse range of specialist expertise. With faith in the future of humanity and society, our mission is to serve as a hub for the network of intellectual resources that exist in society today, and to prepare for the next step forward by creating together pioneering knowledge-based values built on both ideals and feasibility.

This is the path we walk toward the future.

Philosophy

Humanism, Romanticism, Realism

Looking to the future, we create value through pioneering intellectual work, exploring reality and ideals and putting our trust in people and society.



Consulting

By taking on the many management issues that companies encounter, we have become a leading provider of consulting services. With over 400 consultants, we handle around 2,500 projects every year for clients ranging from small businesses up to large corporations. From this experience, we have gained the practical skills and professional know-how to provide support for effective and efficient project execution.

Key fields
Management & business strategy (domestic and international), open innovation, organizational & personnel strategy, HR technology, IT strategy, ESG strategy, marketing strategy, business management, global operations support



Management Information Services

Our wide-ranging management information services, which include lectures, seminars and online services, enable us to comprehensively support the business growth of Japan-based client companies of MUFG Bank.



Human Resources Development

As human resource development services, we are providing various education and training programs for our customers such as MUFG business seminars, business schools, video learning courses and, distance education services. We also customize original in-house training program upon request.



Policy Research

Through highly specialized research and analysis, we help national and local governments. We have over 200 researchers and analysts based in Tokyo, Nagoya and Osaka. Also, in the spirit of giving back to society, we are actively involved in holding seminars, publishing documents and media appearances to gain the understanding of the general public.

Key fields
Environment and energy; healthcare and social welfare; economy, industry and labor; urban policy and rural revitalization; intellectual property



Social Impact Partnership

As digital transformation and globalization progress rapidly, we are collaborating with our domestic and global partners in order to produce new solutions and services in practical applications such as smart cities, government digital transformation (DX), digital health, and regional revitalization. Furthermore, we are actively involved in policy advocacy, lectures, and training seminars for sustainability and global health.



Economic Research

With expertise spanning a wide range of fields in economics and finance, our economists conduct and publish the results of elaborate multidimensional studies and analyses. Through these efforts, we provide valuable economic and financial information to our clients and the public.



A member of Japan's largest financial group

Mitsubishi UFJ Research and Consulting (MURC)

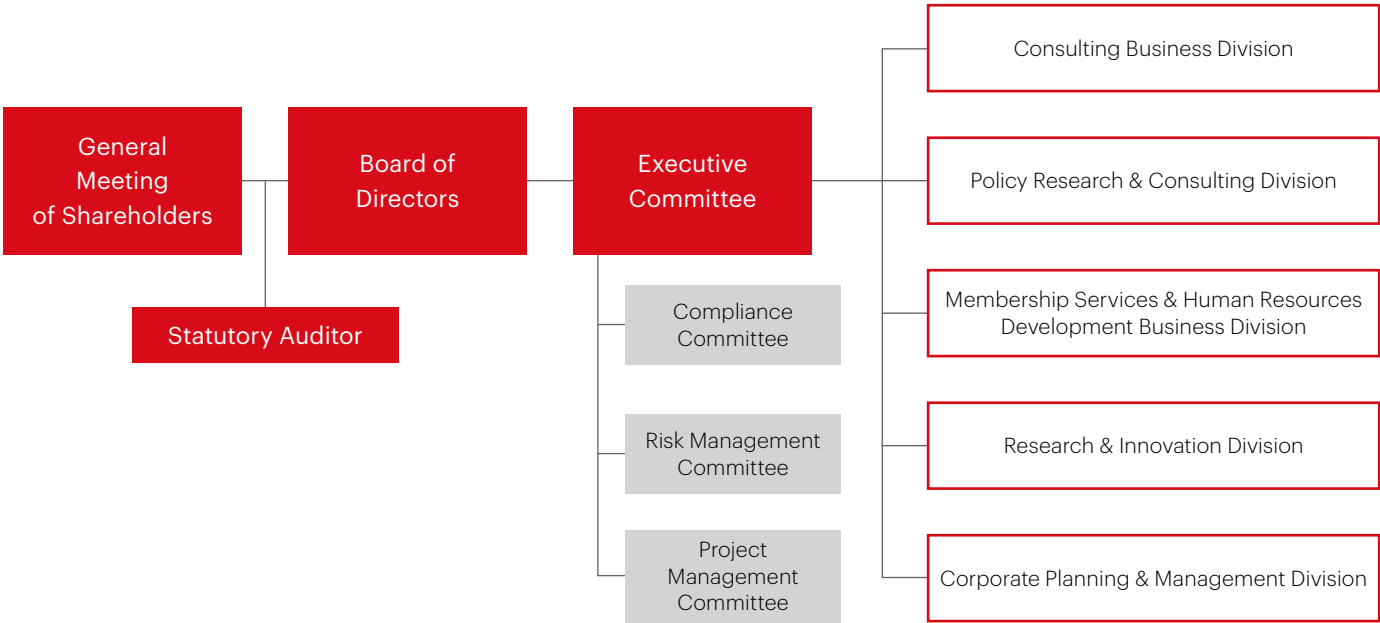
Outline

Company	Mitsubishi UFJ Research and Consulting Co., Ltd.
Headquarters	5-11-2 Toranomom, Minato-ku, Tokyo 105-8501, Japan
Established	October 1985
Paid-in Capital	2.06 billion yen
President	Masakazu Ikeda
Employees	Approximately 1,300 as of April 1, 2023
Stockholders	MUFG Bank, Ltd., Mitsubishi UFJ Capital Co., Ltd., The Mitsubishi UFJ Factors Ltd., and other institutions
Directory	Tokyo (Headquarters), Nagoya, and Osaka
Representative Office	The Representative Office of Mitsubishi UFJ Research and Consulting Co., Ltd. in Ho Chi Minh City
Subsidiary	PT. MU Research and Consulting Indonesia MU Research and Consulting (Thailand) Co., Ltd.



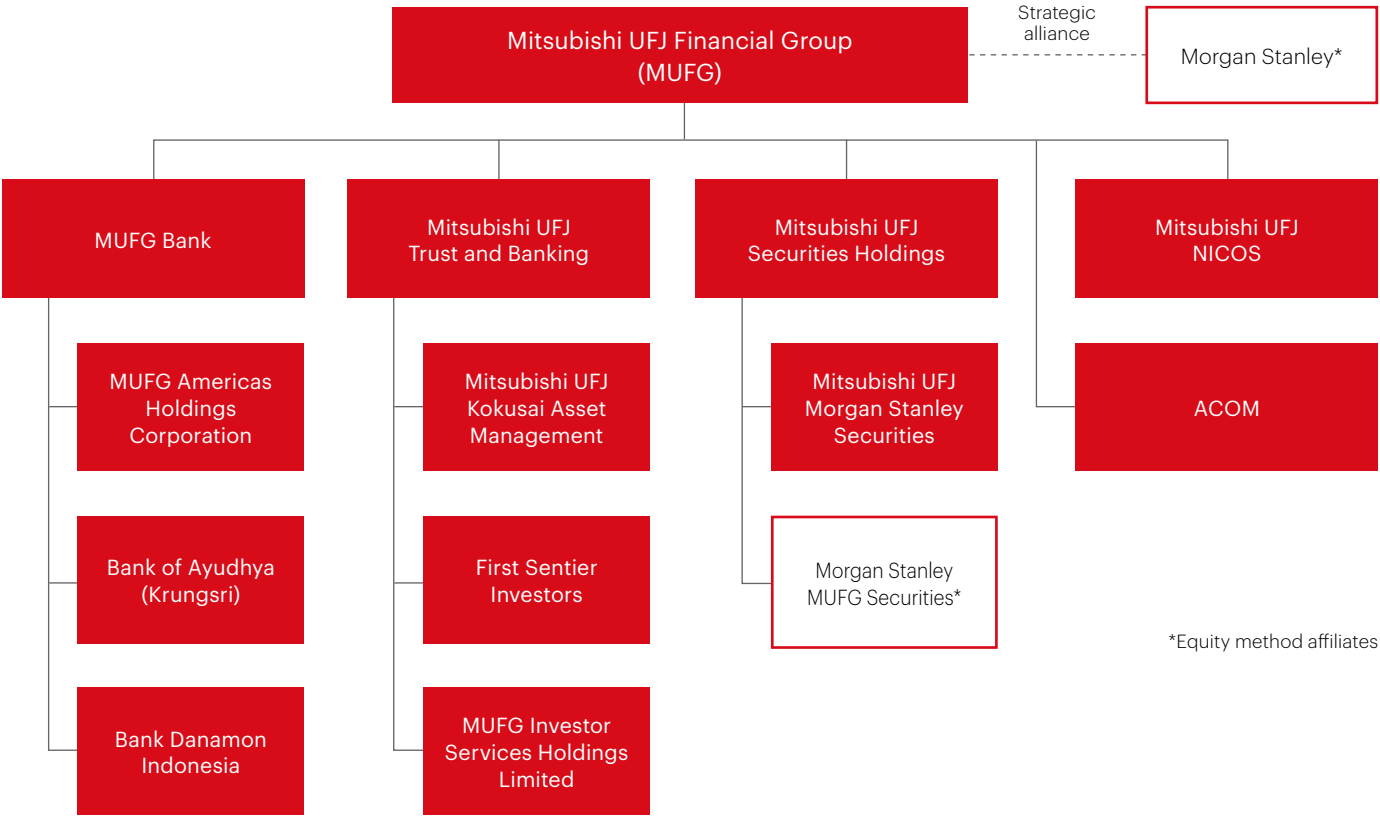
www.murc.jp/english

Organizational Chart



Mitsubishi UFJ Financial Group (MUFG)

Group Comprehensive Strength



*Equity method affiliates

Global Network

